

Welcome

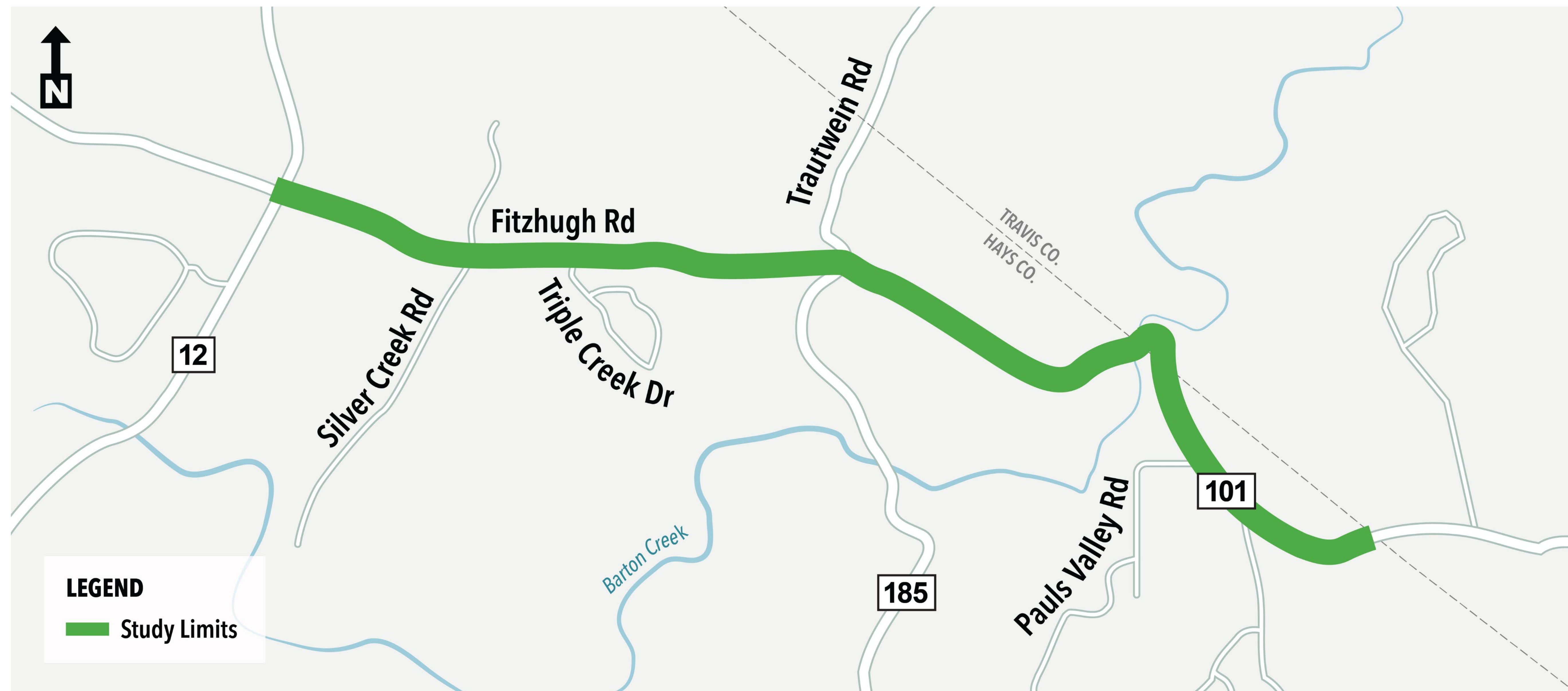


FITZHUGH ROAD SAFETY STUDY

Open House

August 20, 2025

Project Overview



Hays County is planning improvements to Fitzhugh Road from RM 12 to the Hays County line to enhance safety and mobility. Funded through the Hays County Transportation Department, these improvements were shaped by a 2024 safety study and community feedback from the October 2024 public meeting. The County is also evaluating potential improvements at high-crash locations like the Barton Creek crossing and other key intersections.

Safety Study Overview



Since the last Open House in summer 2024, the County and project team have been working to advance the proposed safety improvements. The Safety Study found:

With **4,400 average daily travelers**, Fitzhugh Road faces challenges such as:

Narrow lanes and shoulders, pavement deterioration



Sight line obstructions



Throughout 2019 – 2023, **54 crashes occurred** along the corridor

Non-intersection related

54%

Unsignalized intersection crashes

30%

RM 12 and Fitzhugh Road intersection crashes

16%

Based on this information, safety improvements were developed to meet the immediate needs of the corridor.

Identified Near Term Improvements



Hays County is currently identifying funding sources for the design and construction of the near-term improvements.

INSTALL SHOULDERS WITH RUMBLE STRIPS

UPDATE PAVEMENT MARKINGS

INSTALL GUARDRAILS WITH DELINEATORS

**INSTALL RADAR SPEED LIMIT SIGNS, CHEVRON SIGNS,
CURVE WARNING SIGNS**

May - July 2024

August 2024

October 2024

August 2025

Summer - Fall 2025

Safety study analysis
and development of
safety improvement
concepts

Property owner
meetings

Open House 1

Open House 2 and
property owner
meetings

Begin design of
near-term improvements
and RM 12 at Fitzhugh
Road intersection

Ultimate Configuration Options

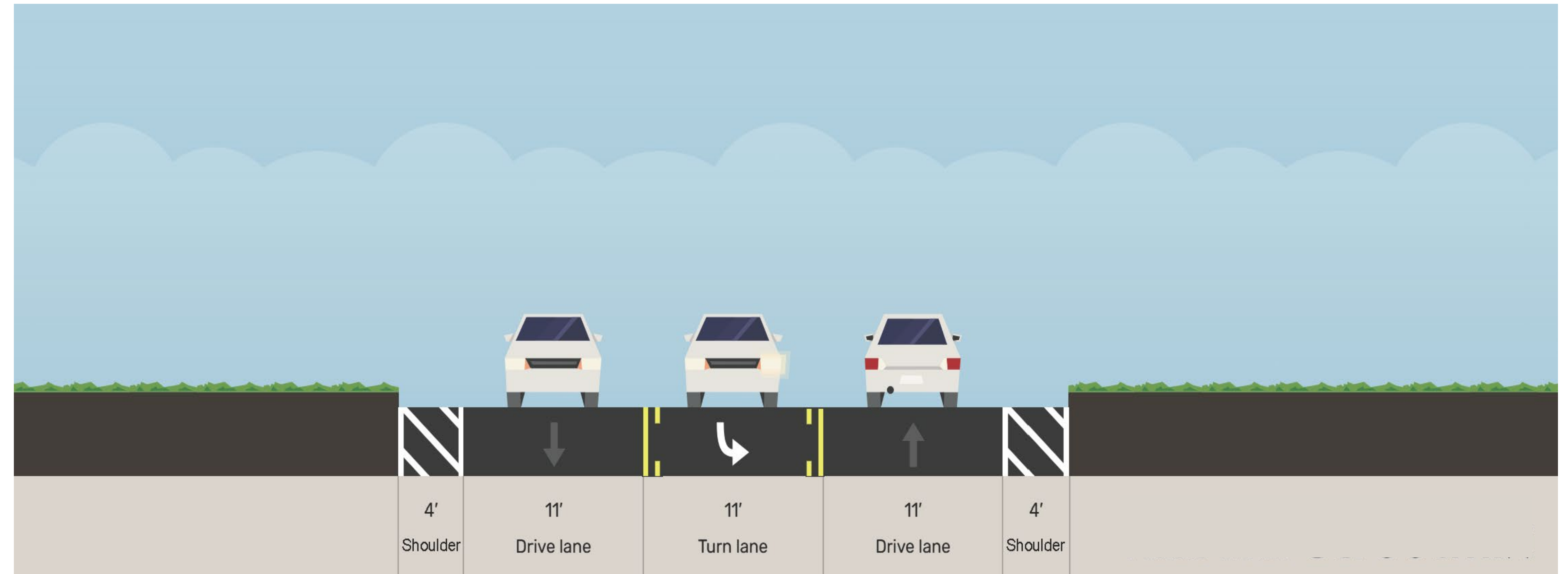


Below are possible roadway configurations at identified intersections and along Fitzhugh Road.

Potential Intersection Improvements

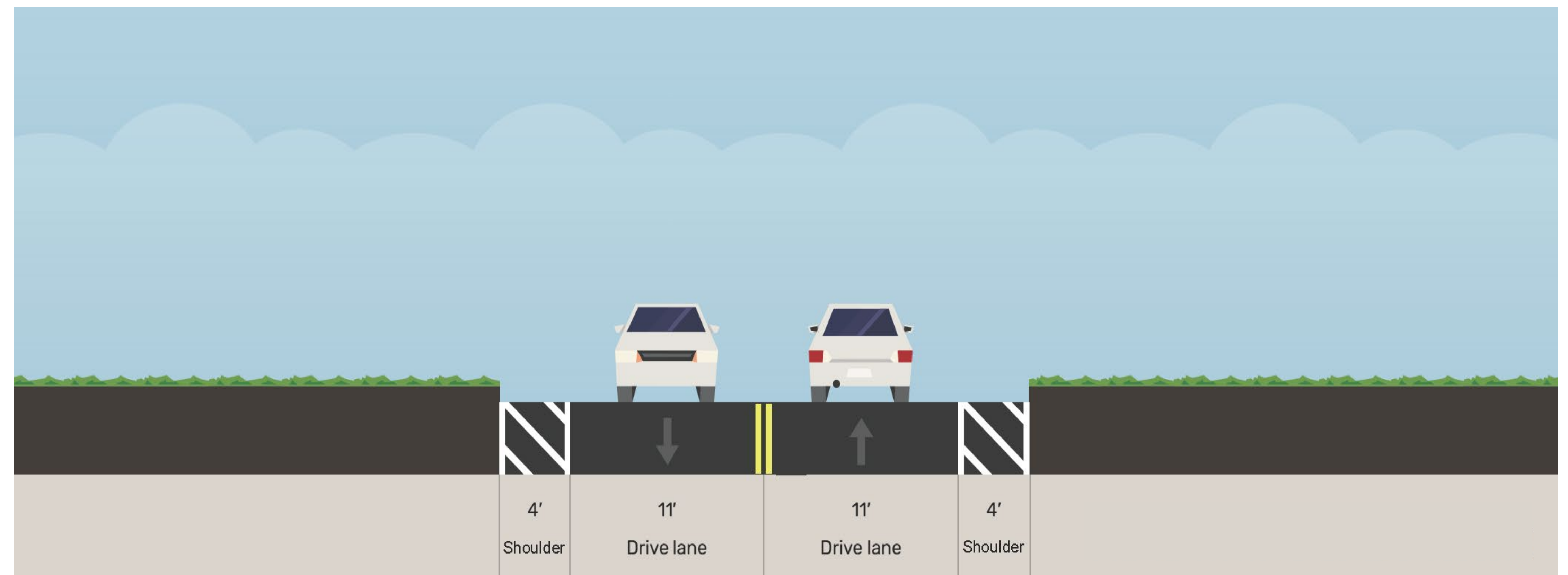
at High-Crash Locations

- 11-foot **center turn lanes** at key intersections
- 11-foot **travel lanes** in both directions
- 4-foot **shoulders**



Potential Roadway Improvements

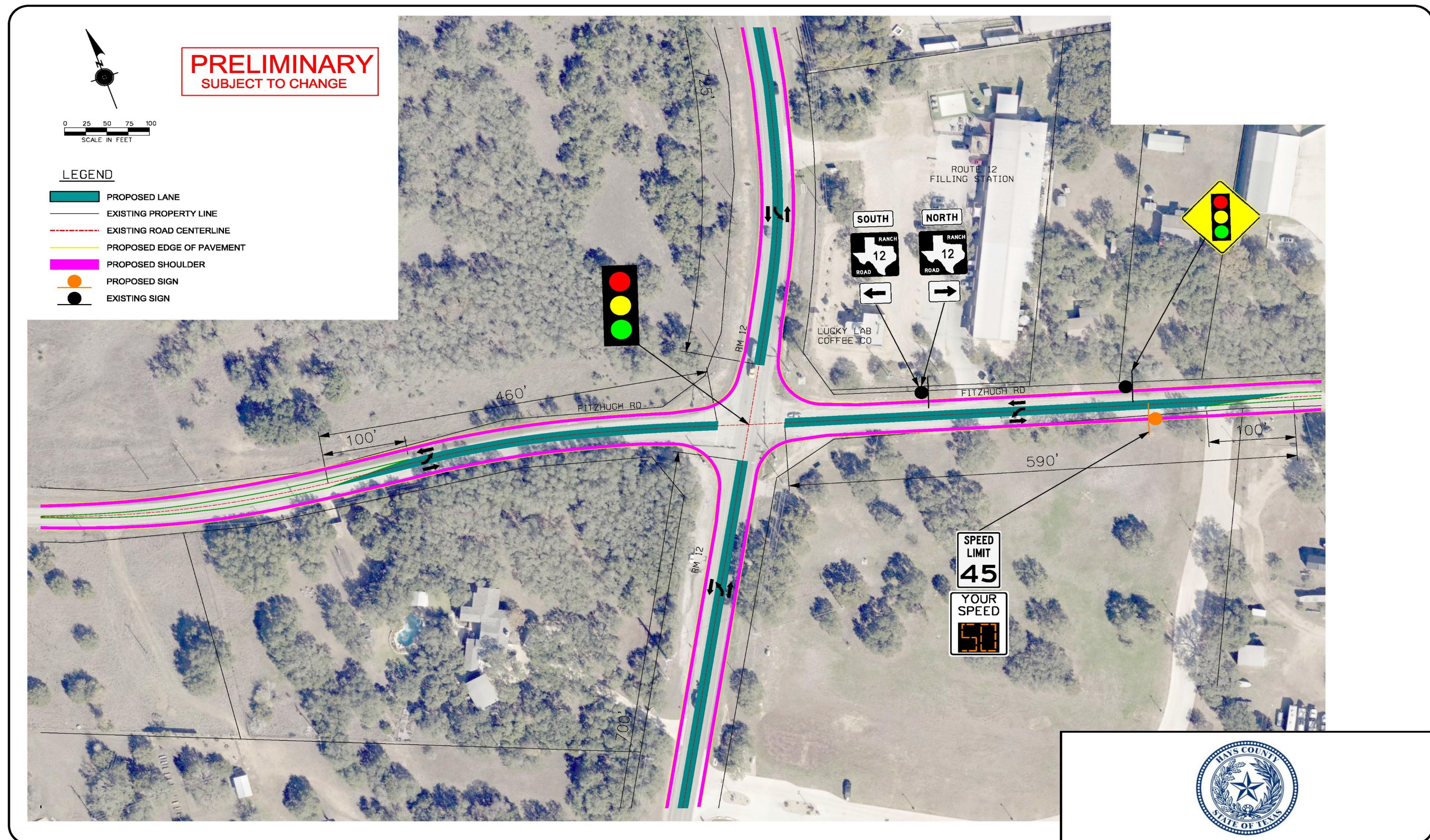
- 11-foot **travel lanes** in each direction
- 4-foot **shoulders**



RM 12 at Fitzhugh Road Intersection



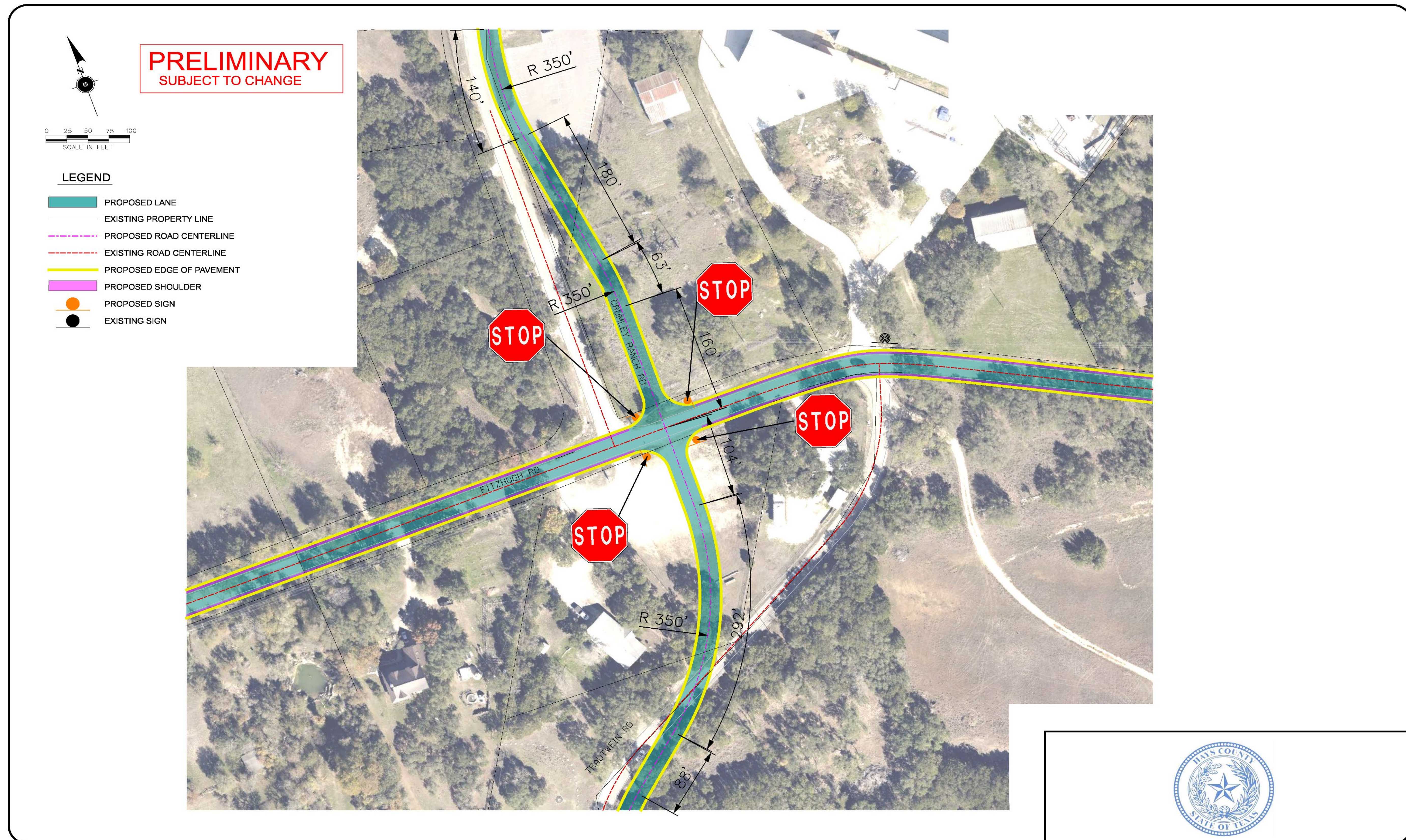
Hays County, in coordination with the Texas Department of Transportation, is designing improvements to the RM 12 at Fitzhugh Road intersection. Improvements include left-turn lanes on both RM 12 and Fitzhugh Road and additional signage.



Trautwein Road at Fitzhugh Road – Scenario A



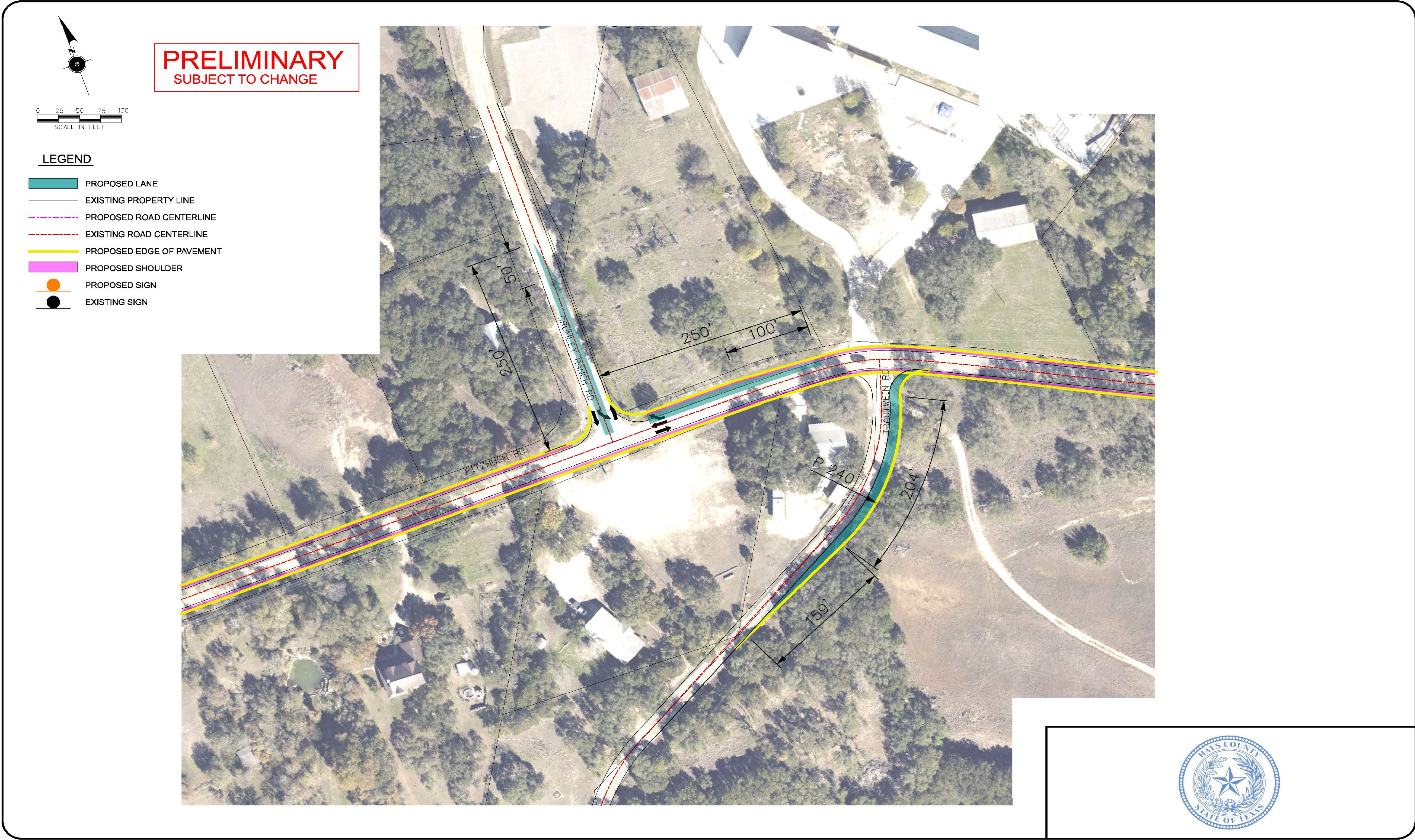
Hays County is evaluating options for improvements to the Trautwein Road at Fitzhugh Road intersection. Scenario A includes a realignment of Crumley Ranch Road and Trautwein Road, and a four-way stop.



Trautwein Road at Fitzhugh Road – Scenario B



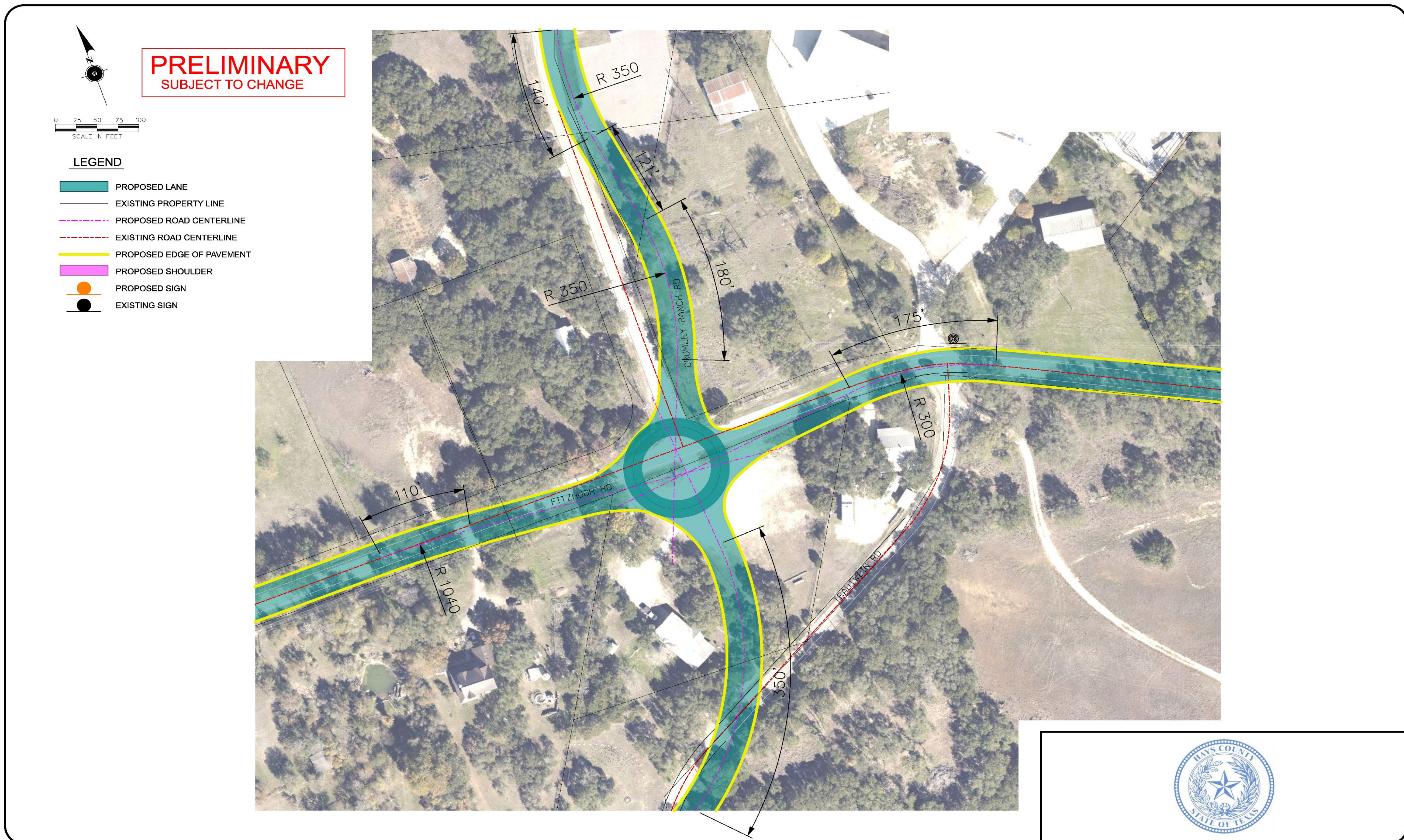
Hays County is evaluating options for improvements to the Trautwein Road at Fitzhugh Road intersection. Scenario B includes additional turn lanes on Crumley Ranch Road, Trautwein Road, and Fitzhugh Road.



Trautwein Road at Fitzhugh Road – Scenario C



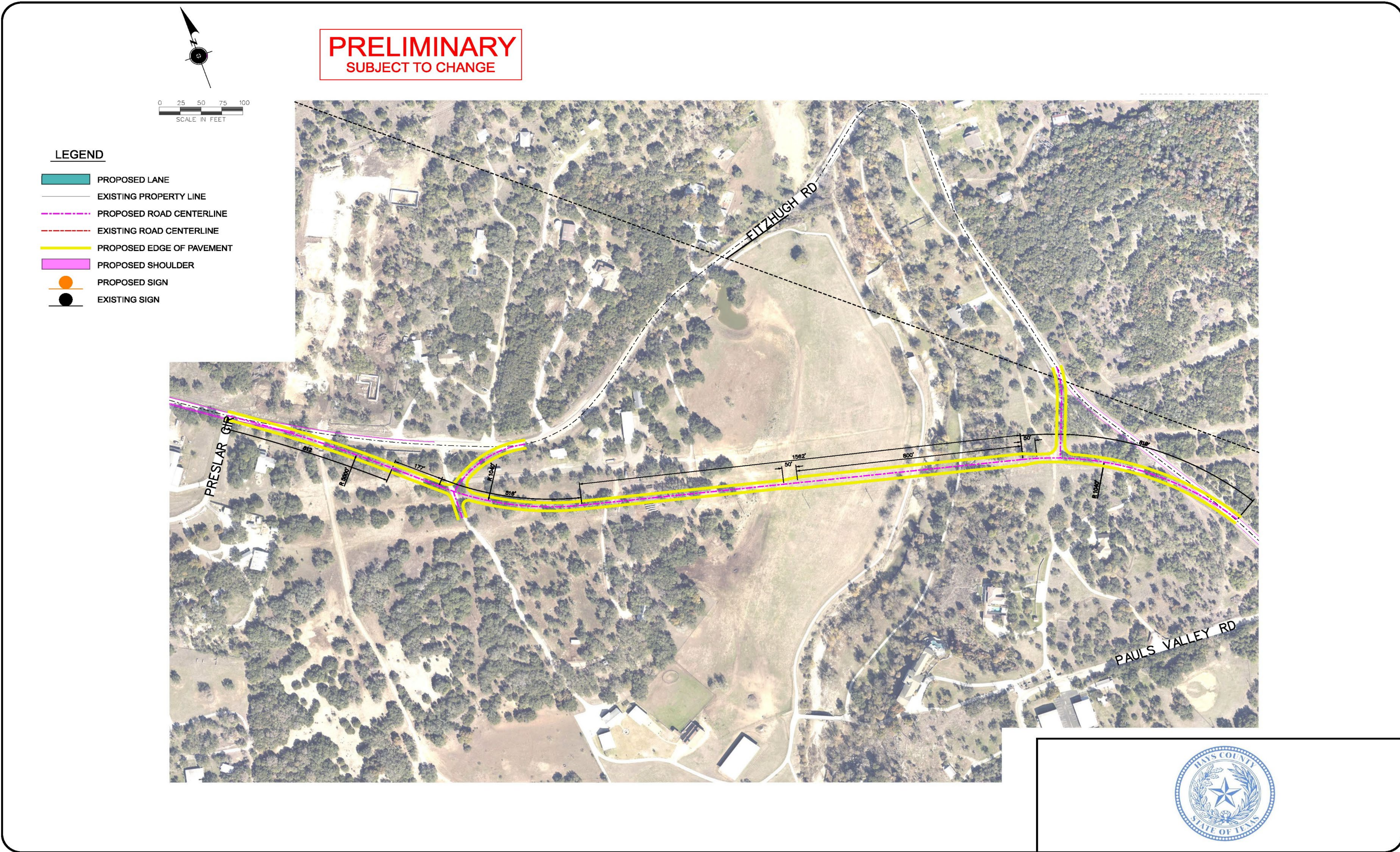
Hays County is evaluating options for improvements to the Trautwein Road at Fitzhugh Road intersection. Scenario C includes a realignment of Crumley Ranch Road, Trautwein Road and Fitzhugh Road, and a roundabout intersection.



Barton Creek Crossing – Scenario A



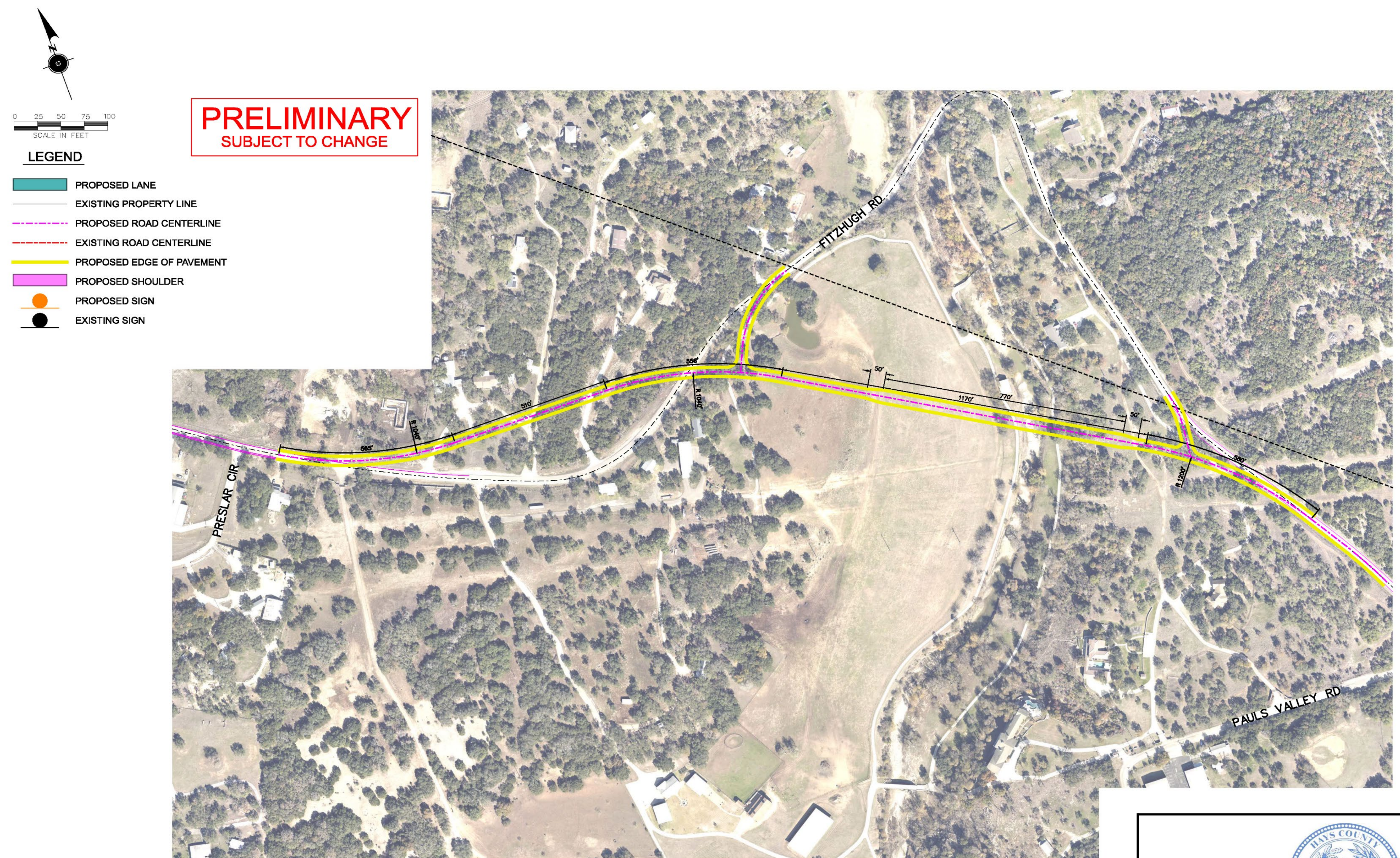
Hays County is evaluating options for improvements to the Barton Creek crossing along Fitzhugh Road. Both scenarios include a realignment of Fitzhugh Road.



Barton Creek Crossing – Scenario B



Hays County is evaluating options for improvements to the Barton Creek crossing along Fitzhugh Road. Both scenarios include a realignment of Fitzhugh Road.



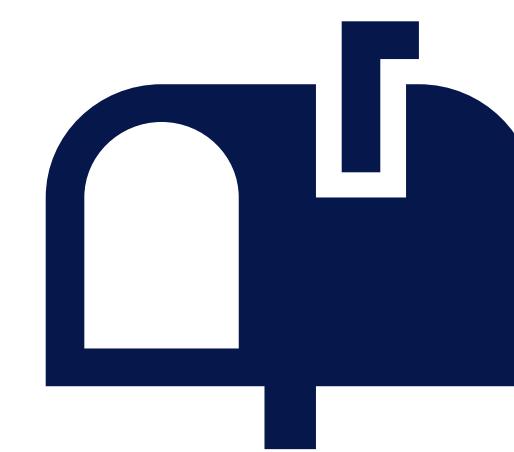
Comments & Questions



Submit your comments:
Aug. 20 – Sept. 5, 2025



Visit us online at
FitzhughSafetyStudy.com



Fitzhugh Road Corridor Study

c/o CD&P
PO Box 5459
Austin, Tx 78763



Email:
outreach@fitzhughsafetystudy.com



Scan the QR code
to submit your
input online!